



GRATINGS IN DUCTILE IRON

D400

d400



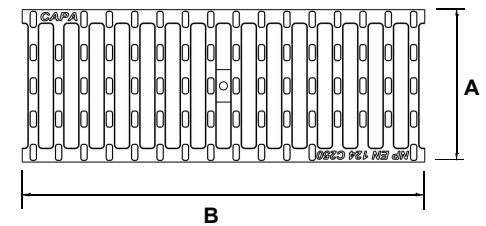
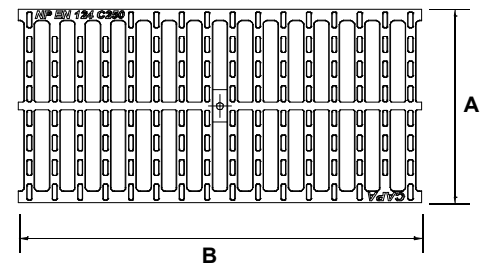
DESCRIPTION

Ductile cast iron grates for linear drainage of rainwater.



Model	Ref	B	A	H	Class
Gratings	924001	500	123	23	D400
	924002	500	188	23	D400
	924003	500	240	23	D400
	924004	500	300	23	D400
Frames	503413	1000	130	25	-
	503414	1000	200	25	-
	503415	1000	250	25	-
	503416	1000	310	25	-
	503411	500	130	25	-
	503410	500	200	25	-
	503412	500	250	25	-
503417	500	310	25	-	

DRAWINGS



FEATURES:

- Spheroidal graphite cast iron grid according to EN-GJS-500-7, EN 1563;
- According to EN 124-2:2015, load class D400;
- Possibility of fixing the grid through a screw;
- Non-slip surface;
- Black paint with anti-corrosion protection.

INSTALLATION LOCATION:

Roadways (including pedestrian streets), stabilized berms and car parks for all types of road vehicles.

Routes of Car Circulation:

- Access to garages;
- Parking lots.

Pedestrian Circulation Pathways:

- Buildings;
- Pedestrian streets.

For a correct installation the gratings should be assembled with a metal ring with a system for fixing.