

SS
304

SS
316



Modultek 125

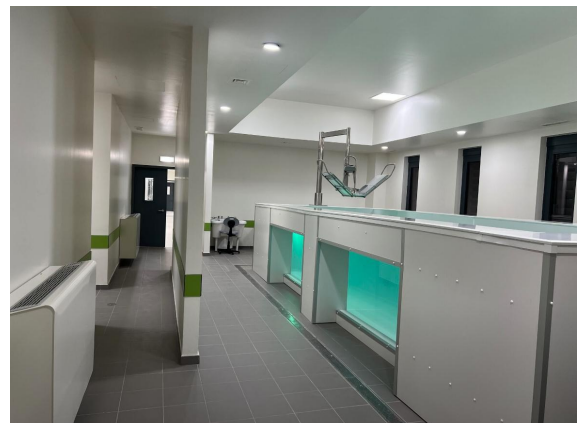
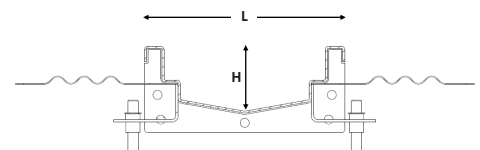
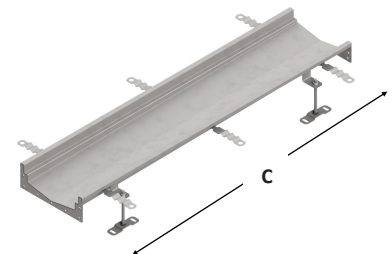
Built for demanding environments

The Modultek 125 is a modular high-performance, stainless steel linear channel system engineered for flexibility, durability.

The modular system easily configures your drainage layout with a wide range of channel lengths, depths, and invert options. The drainage channels are 155mm wide and range in height from 50 to 125mm, with or without incorporated slopes. Manufactured entirely from AISI 304 or 316 stainless steel, ensuring long-lasting corrosion resistance. The V-shaped bottom for greater efficiency and channel cleanliness even at low flow rates. The NBR flanges and joints ensure the watertightness of the drainage line. A variety of grates are available, with a width of 123mm, suitable for load classes ranging from A15 to C250, according to EN1433.

Level invert channels

aisi 304	aisi 316	C	L	H1	H2
57.41.0.C1	57.61.0.C1	500	155	50	50
57.41.0.C2	57.61.0.C2			65	65
57.41.0.C3	57.61.0.C3			80	80
57.41.0.C4	57.61.0.C4			95	95
57.41.0.C5	57.61.0.C5			110	110
57.41.0.C6	57.61.0.C6			125	125
57.41.1.C1	57.61.1.C1	1000	155	50	50
57.41.1.C2	57.61.1.C2			65	65
57.41.1.C3	57.61.1.C3			80	80
57.41.1.C4	57.61.1.C4			95	95
57.41.1.C5	57.61.1.C5			110	110
57.41.1.C6	57.61.1.C6			125	125
57.41.2.C1	57.61.2.C1	2000	155	50	50
57.41.2.C2	57.61.2.C2			65	65
57.41.2.C3	57.61.2.C3			80	80
57.41.2.C4	57.61.2.C4			95	95
57.41.2.C5	57.61.2.C5			110	110
57.41.2.C6	57.61.2.C6			125	125
57.41.3.C1	57.61.3.C1	3000	155	50	50
57.41.3.C2	57.61.3.C2			65	65
57.41.3.C3	57.61.3.C3			80	80
57.41.3.C4	57.61.3.C4			95	95
57.41.3.C5	57.61.3.C5			110	110
57.41.3.C6	57.61.3.C6			125	125



C - length // L - width // H1 - height 1 // H2 - height 2

SS
304

SS
316

Modultek 125

Corner unit "L"

aisi 304	aisi 316	C	L	H1	H2
57.41.0.L1	57.61.0.L1	515	640	50	50
57.41.0.L3	57.61.0.L3			80	80



"T" Unit

aisi 304	aisi 316	C	L	H1	H2
57.41.1.T1	57.61.1.T1	515	640	50	50
57.41.1.T3	57.61.1.T3			80	80



Sloping invert channels

aisi 304	aisi 316	C	L	H1	H2
57.41.0.P1	57.61.0.P1	500	155	50	65
57.41.0.P2	57.61.0.P2			65	80
57.41.1.P1	57.61.1.P1	1000	155	50	65
57.41.1.P2	57.61.1.P2			65	80
57.41.2.P1	57.61.2.C1	2000	155	50	65
57.41.2.P2	57.61.2.C2			65	80
57.41.2.P3	57.61.2.C3			80	95
57.41.2.P4	57.61.2.C4			95	110
57.41.2.P5	57.61.2.C5			110	125
57.41.3.P1	57.61.3.C1	3000	155	50	65
57.41.3.P2	57.61.3.C2			65	80
57.41.3.P3	57.61.3.C3			80	95
57.41.3.P4	57.61.3.C4			95	110
57.41.3.P5	57.61.3.C5			110	125



C - length // L - width // H1 - height 1 // H2 - height 2

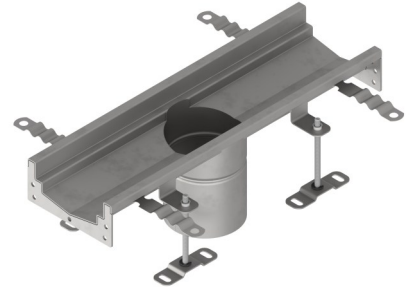
SS
304

SS
316

Modultek 125

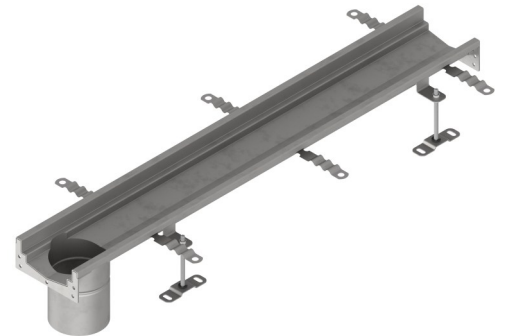
500mm gully channels—central outlet

aisi 304	aisi 316	C	L	H1	DN
57.41.0.SC1	57.61.0.SC1	500	155	50	110
57.41.0.SC2	57.61.0.SC2			65	110
57.41.0.SC3	57.61.0.SC3			80	110
57.41.0.SC4	57.61.0.SC4			95	110
57.41.0.SC5	57.61.0.SC5			110	110
57.41.0.SC6	57.61.0.SC6			125	110



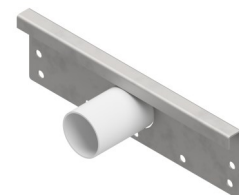
1000mm gully channels—end outlet

aisi 304	aisi 316	C	L	H	DN
57.41.1.SF1	57.61.1.SF1	1000	155	50	110
57.41.1.SF2	57.61.1.SF2			65	110
57.41.1.SF3	57.61.1.SF3			80	110
57.41.1.SF4	57.61.1.SF4			95	110
57.41.1.SF5	57.61.1.SF5			110	110
57.41.1.SF6	57.61.1.SF6			125	110



End caps

aisi 304	aisi 316	C	L	H	DN
57A.41.TF1	57A.61.TF1	15	155	50	fechado
57A.41.TF2	57A.61.TF2			65	
57A.41.TF3	57A.61.TF3			80	
57A.41.TF4	57A.61.TF4			95	
57A.41.TF5	57A.61.TF5			110	
57A.41.TF6	57A.61.TF6			125	
57A.41.TS1	57A.61.TS1	15	155	50	40
57A.41.TS2	57A.61.TS2			65	
57A.41.TS3	57A.61.TS3			80	
57A.41.TS4	57A.61.TS4			95	50
57A.41.TS5	57A.61.TS5			110	
57A.41.TS6	57A.61.TS6			125	



C - length // L - width // H - height // DN - dn outlet

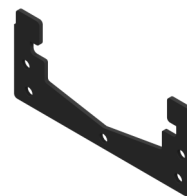
SS
304

SS
316

Modultek 125

NBR gasket

código	L	H	material
57A.41.J1	155	50	NBR
57A.41.J2		65	
57A.41.J3		80	
57A.41.J4		95	
57A.41.J5		110	
57A.41.J6		125	



DN110 Outlet Trap

aisi304	aisi316	L	H	h água
57A.41.S	57A.61.S	108	99	50



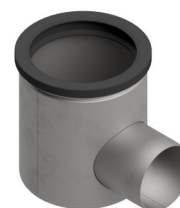
Filter basket

aisi304	aisi316	L	H	h água
57A.41.C0	57A.61.C0	108	99	50



Gully body—DN75 horizontal outlet

aisi304	aisi316	L	H	DN
57A.41.SH	57A.61.SH	139	155	75

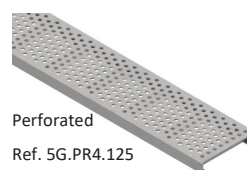


Gratings

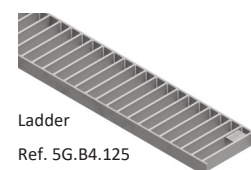
aisi304	aisi316	C	L	H	classe	tipo
5G.QA4.125	5G.QA6.125	1000	123	25	B125	A.S. Mesh
5G.QA4.125M	5G.QA6.125M	500			B125	A.S. Mesh
5G.B4.125	5G.B6.125	1000			C250	Ladder
5G.B4.125M	5G.B6.125M	500			C250	Ladder
5G.C4.125	5G.C6.125	1000			C250	Slot
5G.C4.125M	5G.C6.125M	500			C250	Slot
5G.PL4.125	5G.PL6.125	1000			A15	perf. L
5G.PL4.125M	5G.PL6.125M	500			A15	perf. L
5G.PR4.125	5G.PR6.125	1000			B125	perf. R
5G.PR4.125M	5G.PR6.125M	500			B125	perf. R



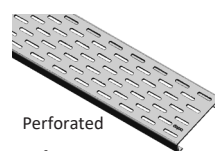
A.S. Mesh
Ref. 502507



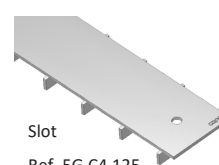
Perforated
Ref. 5G.PR4.125



Ladder
Ref. 5G.B4.125



Perforated
Ref. 5G.PL4.125



Slot
Ref. 5G.C4.125

C - length // L - width // H - height // DN - dn outlet